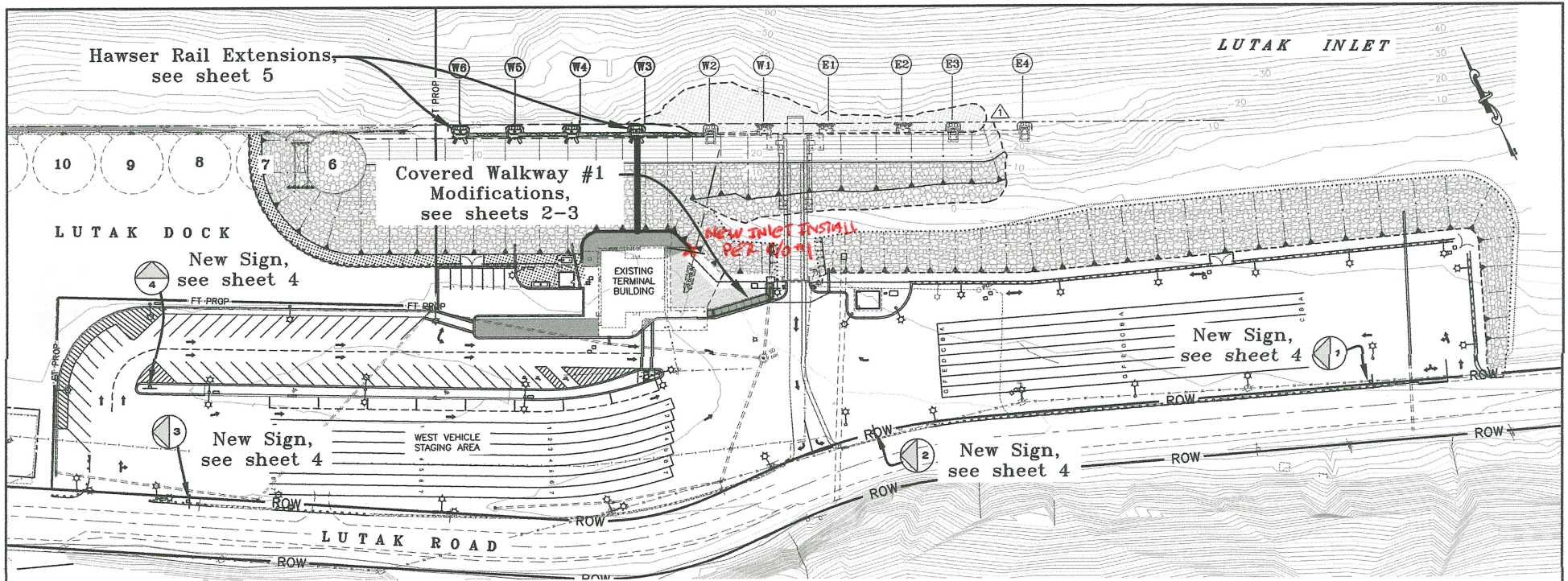
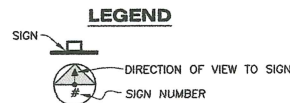


AS-BUILTS



LAYOUT PLAN
 50' 0 50' 100'
 GRAPHIC SCALE (FT)
 1" = 50'



GENERAL NOTES

- REFER TO PROJECT #68433 PLANS FOR EXISTING LAYOUT INFORMATION.
- THE CONTRACTOR SHALL PROVIDE A DETAILED CONSTRUCTION SCHEDULE 14 CALENDAR DAYS PRIOR TO BEGINNING CONSTRUCTION. THE CONTRACTOR SHALL COORDINATE WITH AMHS FOR THE LATEST FERRY SCHEDULES AND UPDATES, AND THE HAINES TERMINAL MANAGER WHEN SCHEDULING CONSTRUCTION ACTIVITIES. THE CONSTRUCTION SCHEDULE SHALL DETAIL THE INTENDED SEQUENCE OF ALL WORK AND MEET THE REQUIREMENTS OF SECTION 108. NO WORK MAY COMMENCE ON SITE UNTIL A CONSTRUCTION SCHEDULE HAS BEEN APPROVED BY THE ENGINEER.
- THE CONTRACTOR SHALL SEQUENCE ALL DEMOLITION AND CONSTRUCTION ACTIVITIES TO MAINTAIN SCHEDULED FERRY SERVICE AND SAFE PUBLIC ACCESS TO THE TERMINAL AND ASSOCIATED VEHICLE AND PASSENGER STAGING AND PARKING AREAS IN ACCORDANCE WITH PUBLISHED ARRIVALS AND DEPARTURES. PRIOR TO SCHEDULED AMHS FERRY ARRIVALS, THE CONTRACTORS EQUIPMENT AND MATERIALS SHALL BE MOVED OR STORED IN LOCATIONS THAT WILL NOT AFFECT SAFE VESSEL ACCESS, BERTHING AND VEHICLE AND PEDESTRIAN TRANSFER OPERATIONS. THE CONTRACTOR MAY STAGE EQUIPMENT ON ANY PART OF STATE OF ALASKA PROPERTY, WITH THE APPROVAL OF THE ENGINEER.

ESTIMATE OF QUANTITIES

ITEM #	ITEM DESCRIPTION	PAY UNIT	QTY.
604 (3)	HAWSER RAIL EXTENSIONS	LUMP SUM	ALL REQUIRED
615 (1)	STANDARD SIGNS	SQUARE FOOT	83
640 (1)	MOBILIZATION & DEMOBILIZATION	LUMP SUM	ALL REQUIRED
640 (4)	WORKER MEALS AND LODGING, OR PER DIEM	LUMP SUM	ALL REQUIRED
695 (1)	COVERED WALKWAY #1 IMPROVEMENTS	LUMP SUM	ALL REQUIRED

BASIS OF ESTIMATE

ITEM #	ITEM DESCRIPTION	PAY UNIT	QTY.
695 (1)	COVERED WALKWAY #1 IMPROVEMENTS	EACH	56
	SQUARE U-BOLTS & HARDWARE	LINEAR FOOT	160
	2 x 10 PLASTIC LUMBER	LINEAR FOOT	70
	6" PERFORATED CPP DRAIN PIPE	LINEAR FOOT	2
	18" DIAMETER CPP	LINEAR FOOT	1
	MANHOLE LID	EACH	13
	POROUS BACKFILL	CUBIC YARD	30
	SIDEWALK REMOVAL/REPLACEMENT	SQUARE FOOT	20
	UNCLASSIFIED EXCAVATION	CUBIC YARD	49
	SNOW STOPS	LINEAR FOOT	

As Advertised:
 February 14, 2017

CONTRACTOR: ISLAND CONTRACTORS
PROJECT ENGINEER: KERI WILLIAMSON
START DATE: MAY 22, 2017
END DATE: JUNE 1, 2017

DO NOT SCALE FROM THESE DRAWINGS USE DIMENSIONS

CHECKED BY: J. OSBORN

STATE OF ALASKA
 DEPARTMENT OF TRANSPORTATION
 & PUBLIC FACILITIES
 SOUTHEAST REGION

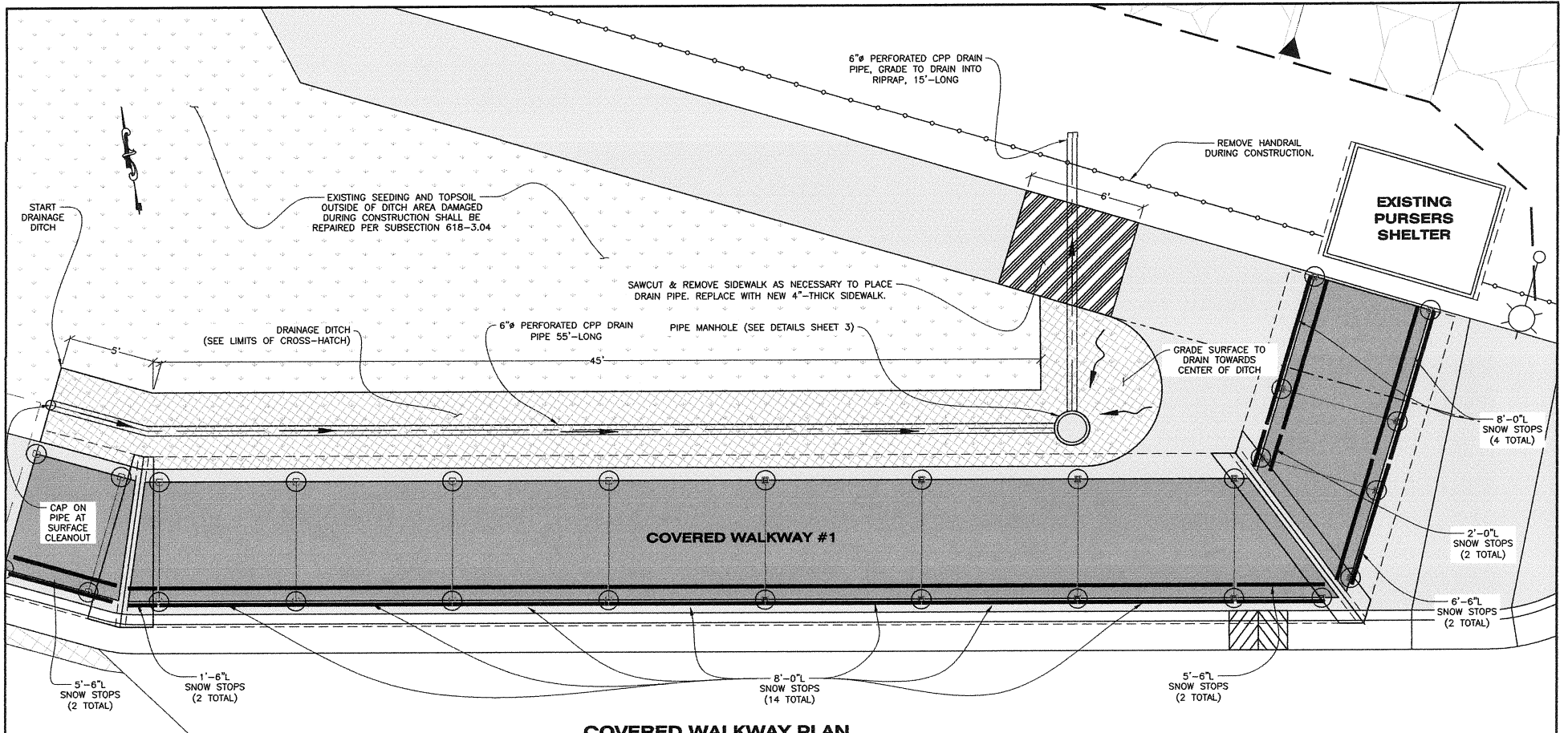
**HAINES FERRY TERMINAL
 HAWSER RAIL & WALKWAY
 IMPROVEMENTS**

LAYOUT & ESTIMATE

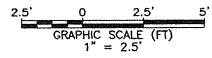
DESIGNED BY: STAFF
 DRAWN BY: STAFF

PATH: Q:\HNS\68433\MF\CONSTRUCTION\SMALL PROCUREMENT\DWGS\1 - LAYOUT & ESTIMATE.DWG
 TAB: 1 Thursday, February 09, 2017 9:55:08 AM WELLS, DAVID H (DOT)


NO.	DATE	REVISIONS DESCRIPTION	PROJECT DESIGNATION	YEAR	SHEET NO.	TOTAL SHEETS
			68433SP	2017	1	5

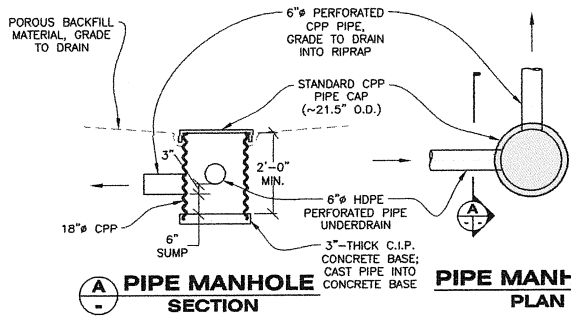


COVERED WALKWAY PLAN

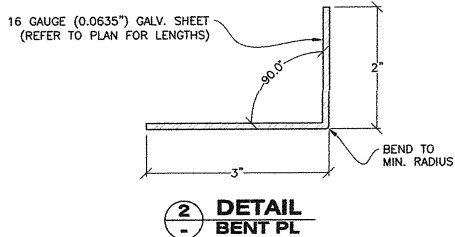


DO NOT SCALE FROM THESE DRAWINGS USE DIMENSIONS

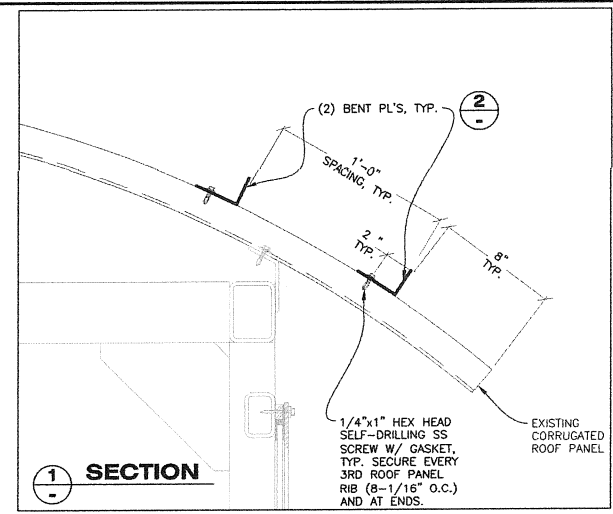
CHECKED BY: J. OSBORN 		STATE OF ALASKA DEPARTMENT OF TRANSPORTATION & PUBLIC FACILITIES SOUTHWEST REGION	
DESIGNED BY: STAFF DRAWN BY: STAFF		HAINES FERRY TERMINAL HAWSER RAIL & WALKWAY IMPROVEMENTS	
PATH: O:\HNS\68433\MF\CONSTRUCTION\SMALL PROCUREMENT\DWGS\2_3 - COVERED WALKWAY #1 TAB: 2 Thursday, February 08, 2017 9:58:49 AM DWELL, DAVID H. (DOT)		COVERED WALKWAY #1 IMPROVEMENTS	
NO. DATE DESCRIPTION		PROJECT DESIGNATION 68433SP	YEAR 2017
		SHEET NO. 2	TOTAL SHEETS 5



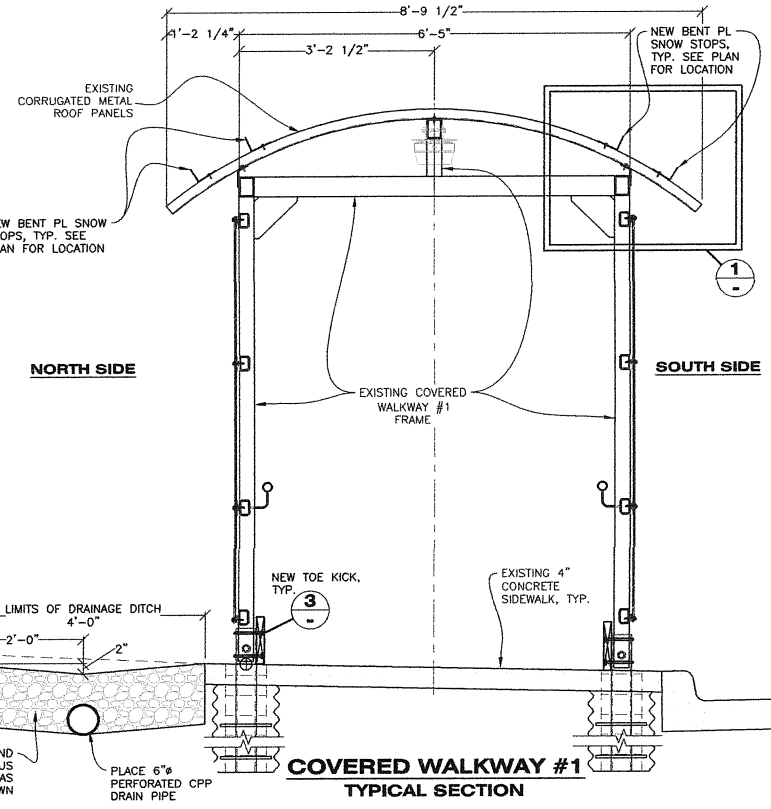
PIPE MANHOLE SECTION
PIPE MANHOLE PLAN



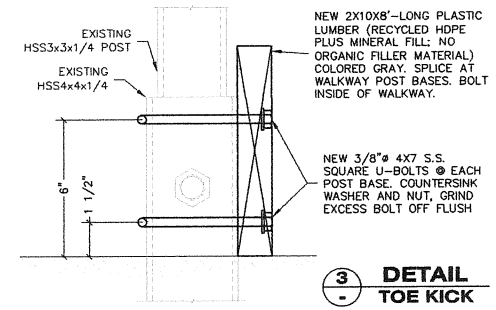
2 **DETAIL BENT PL**



1 **SECTION**



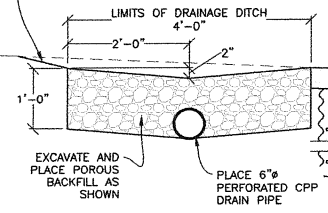
COVERED WALKWAY #1 TYPICAL SECTION




3 **DETAIL TOE KICK**

CUT BACK TO MATCH EXISTING AS SHOWN

EXISTING SEEDING AND TOPSOIL OUTSIDE OF DITCH AREA DAMAGED DURING CONSTRUCTION SHALL BE REPAIRED PER SUBSECTION 618-3.04



DO NOT SCALE FROM THESE DRAWINGS USE DIMENSIONS

CHECKED BY: J. GOSWAMI 		STATE OF ALASKA DEPARTMENT OF TRANSPORTATION & PUBLIC FACILITIES SOUTHWEST REGION HAINES FERRY TERMINAL HAWSER RAIL & WALKWAY IMPROVEMENTS COVERED WALKWAY #1 IMPROVEMENTS	
DESIGNED BY: STAFF	DRAWN BY: STAFF	PROJECT DESIGNATION: 68433SP	YEAR: 2017
PATH: Q:\HNS\68433\MP\CONSTRUCTION\SMALL PROCUREMENT\DWG\2_3 - COVERED WALKWAY #1 TAB: 3 Thursday, February 09, 2017 9:59:03 AM EWELL, DAVID H (D07)		SHEET NO.: 3	TOTAL SHEETS: 5
NO.	DATE	DESCRIPTION	



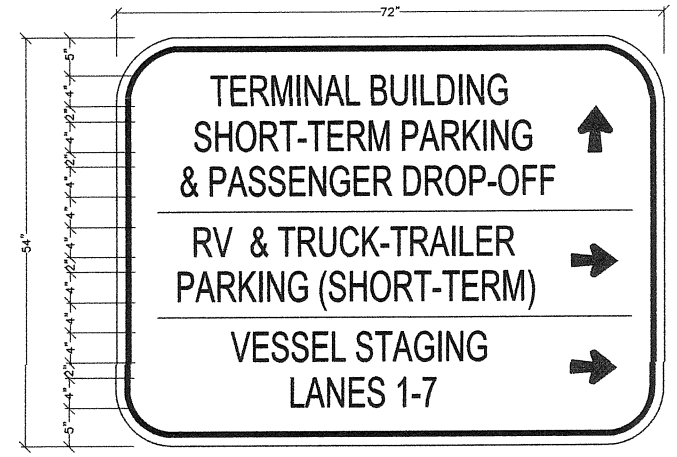
S1 SPECIAL SIGN DETAILS
TYPE C LETTERS



S2 SPECIAL SIGN DETAILS
TYPE C LETTERS



S3 SPECIAL SIGN DETAILS
TYPE C LETTERS




S4 SPECIAL SIGN DETAILS
TYPE C LETTERS

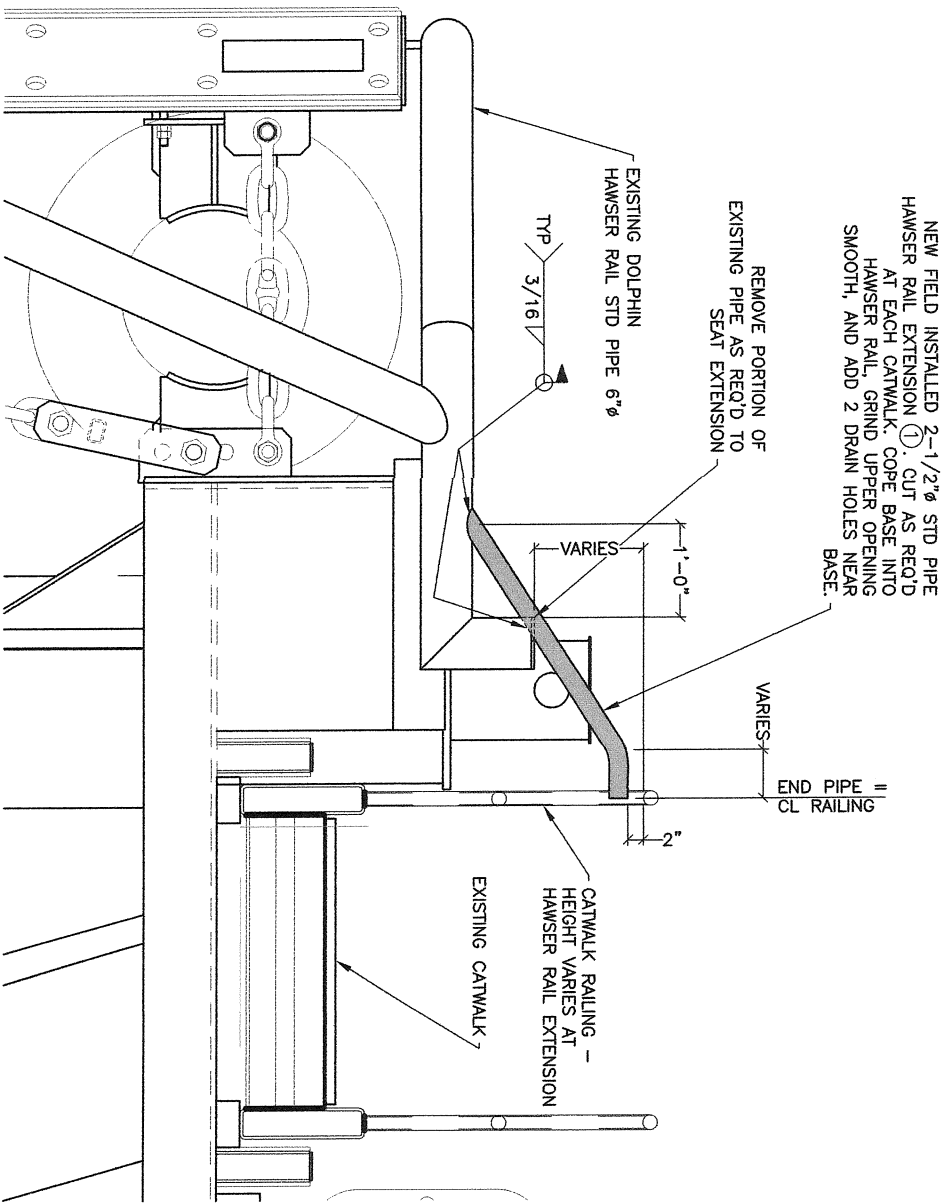
*RE--USE EXISTING SIGN POST. INSTALL NEW SIGN POST AND BASE PER STANDARD DRAWING S-30.04.

NOTE:

- REFER TO PROJECT #68433 SIGNING PLANS FOR EXISTING LOCATION OF SIGNS. REUSE EXISTING SIGN POSTS UNLESS OTHERWISE NOTED. PROVIDE NEW WIND FRAMING FOR LARGER SIGNS PER STANDARD DRAWING S-00.11.
- FABRICATE ALL SIGNS FROM 0.125" THICK ALUMINUM SHEETING, UNLESS OTHERWISE NOTED.
- SIGNS SHALL BE COLORED AS FOLLOWS (UNLESS OTHERWISE NOTED):
 BORDER: YELLOW
 LETTERING: WHITE
 BACKGROUND: MARINE BLUE

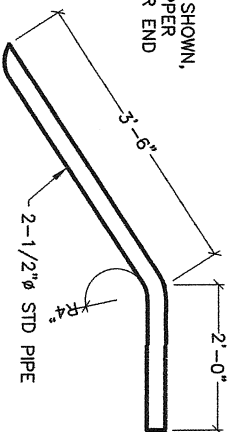
DO NOT SCALE FROM THESE DRAWINGS USE DIMENSIONS

CHECKED BY: J. GOSPERN 		STATE OF ALASKA DEPARTMENT OF TRANSPORTATION & PUBLIC FACILITIES SOUTHEAST REGION HAINES FERRY TERMINAL HAWSER RAIL & WALKWAY IMPROVEMENTS SPECIAL SIGNS																								
DESIGNED BY: STAFF DRAWN BY: STAFF		PATH: O:\HNS\68433\WF\CONSTRUCTION\SMALL PROCUREMENT\DWGS\4 - SPECIAL SIGN.DWG TAB: 4 Thursday, February 09, 2017 10:04:07 AM WELLS, DAVID H (DOT)																								
<table border="1"> <thead> <tr> <th colspan="2">REVISIONS</th> <th rowspan="2">PROJECT DESIGNATION</th> <th rowspan="2">YEAR</th> <th rowspan="2">SHEET NO.</th> <th rowspan="2">TOTAL SHEETS</th> </tr> <tr> <th>NO.</th> <th>DATE</th> <th>DESCRIPTION</th> </tr> </thead> <tbody> <tr> <td> </td> <td> </td> <td> </td> <td> </td> <td> </td> <td> </td> </tr> </tbody> </table>		REVISIONS		PROJECT DESIGNATION	YEAR	SHEET NO.	TOTAL SHEETS	NO.	DATE	DESCRIPTION							<table border="1"> <tr> <td>PROJECT DESIGNATION</td> <td>YEAR</td> <td>SHEET NO.</td> <td>TOTAL SHEETS</td> </tr> <tr> <td>68433SP</td> <td>2017</td> <td>4</td> <td>5</td> </tr> </table>		PROJECT DESIGNATION	YEAR	SHEET NO.	TOTAL SHEETS	68433SP	2017	4	5
REVISIONS		PROJECT DESIGNATION	YEAR					SHEET NO.	TOTAL SHEETS																	
NO.	DATE			DESCRIPTION																						
PROJECT DESIGNATION	YEAR	SHEET NO.	TOTAL SHEETS																							
68433SP	2017	4	5																							



HAWSER RAIL EXTENSION ELEVATION

NOTE: SUPPLY AS SHOWN,
THEN FIELD CUT UPPER
END & COPE LOWER END
AS REQ'D TO FIT



1
HAWSER RAIL EXTENSION - 3 REQ'D

NOTE:
1. INSTALL HAWSER RAILS ON EAST SIDE OF DOLPHIN W6,
BOTH SIDES OF DOLPHIN W3.

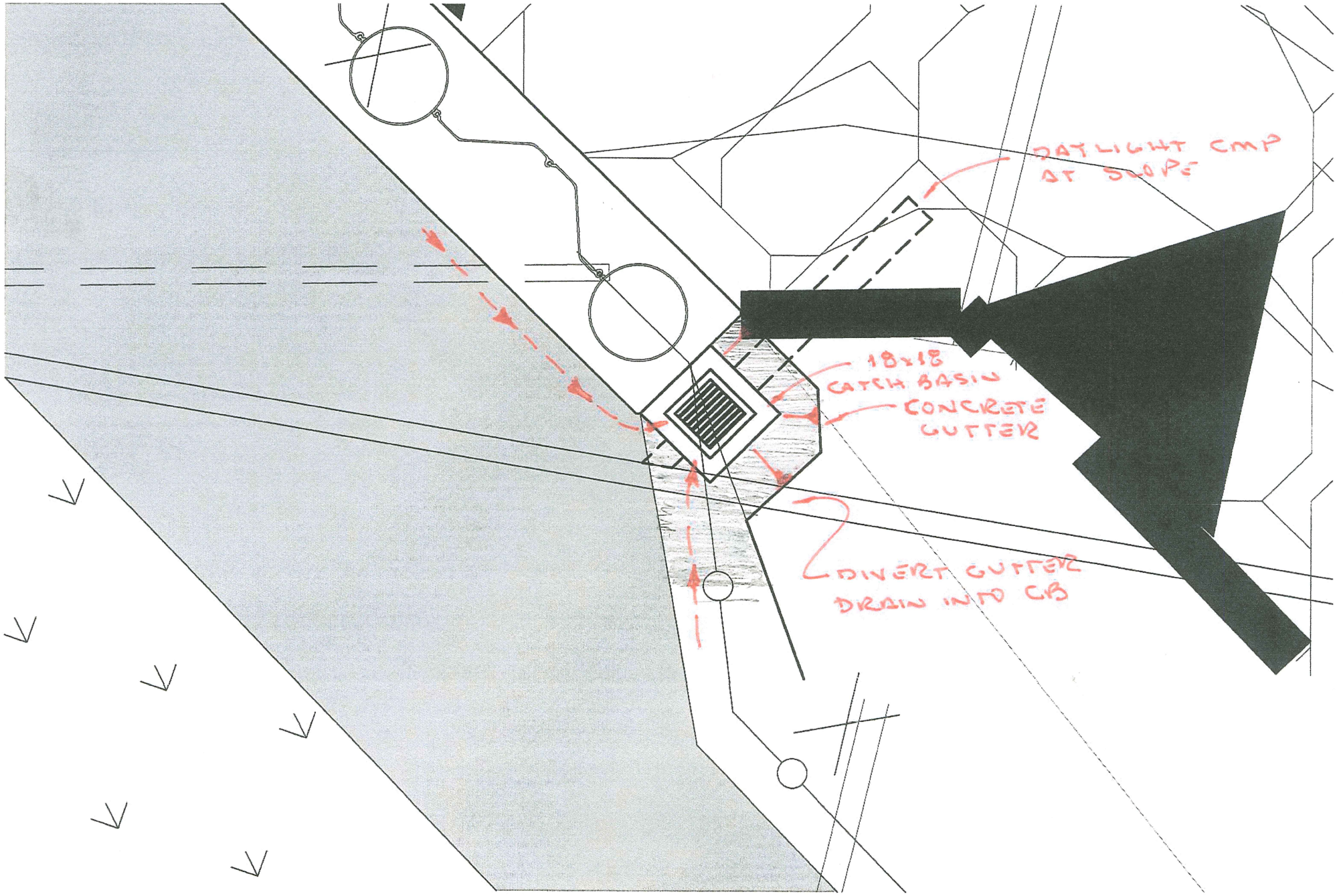
DO NOT SCALE FROM THESE DRAWINGS USE DIMENSIONS



**DOLPHIN HAWSER
RAIL EXTENSIONS**

**HAINES FERRY TERMINAL
HAWSER RAIL & WALKWAY
IMPROVEMENTS**

DESIGNED BY: STAFF		STATE OF ALASKA DEPARTMENT OF TRANSPORTATION SOUTHEAST REGION	
DRAWN BY: STAFF			
PATH: Q:\HNS\68433\MF\CONSTRUCTION\SMALL PROCUREMENT\DWGS\5 - HAWSER RAIL MODS.DWG			
TAB: 5		Thursday, February 09, 2017 10:05:58 AM	
NO. DATE		REVISIONS DESCRIPTION	
PROJECT DESIGNATION		YEAR	
68433SP		2017	
SHEET NO.		TOTAL SHEETS	
5		5	



HAINES RT
68433